



HOW TO ORDER

Reset

INDIVIDUAL BASE

Port size	Side ports	Bottom ports	Bottom cylinder ports 2 and 4.	Bottom port 1
<b>G3/8"</b>	MB-A2B-121	MB-A2B-123	MB-A2B-122	MB-A2B-124
<b>G1/2"</b>	MB-A2B-131	MB-A2B-133	MB-A2B-132	MB-A2B-134

INDIVIDUAL BASE ACCORDING TO VDMA 24345

Port size	Side ports	Bottom ports
<b>G3/8"</b>	HB-A2B-A	HB-A2B-B

MANIFOLD BASE

Port size	Side ports	Bottom ports	Bottom cylinder ports 2 and 4.	Bottom port 1
<b>G3/8"</b>	MM-A2B-121	MM-A2B-123	MM-A2B-122	MM-A2B-124
<b>G1/2"</b>	MM-A2B-131	MM-A2B-133	MM-A2B-132	MM-A2B-134

Manifold fastening kit : N-63002-01.

MANIFOLD BASE ACCORDING TO VDMA 24345

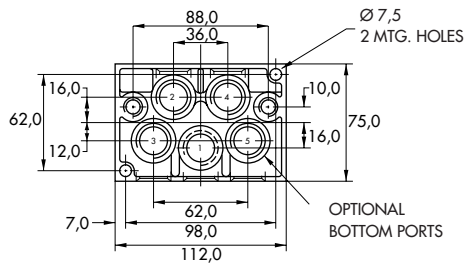
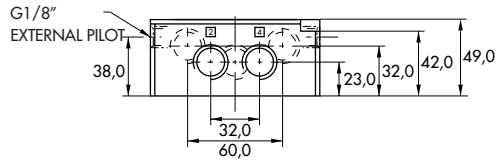
Port size	Bottom cylinder ports 2 and 4
<b>G3/8"</b>	HM-A2B-C

End plate kit : HM-A2B-D.

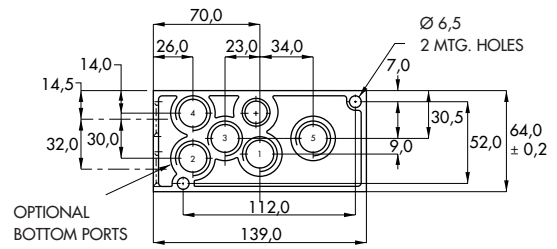
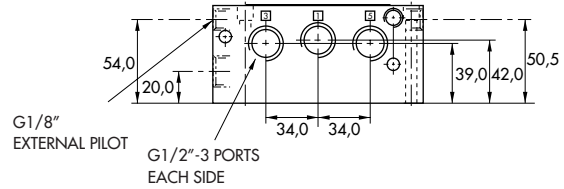
**DIMENSIONS**

Individual

DIN 5599/1



Manifold



VDMA

